

DouWin
Lock

DOUWIN Int'l Industry Limited

Smart Door Lock Management Software Ver2010

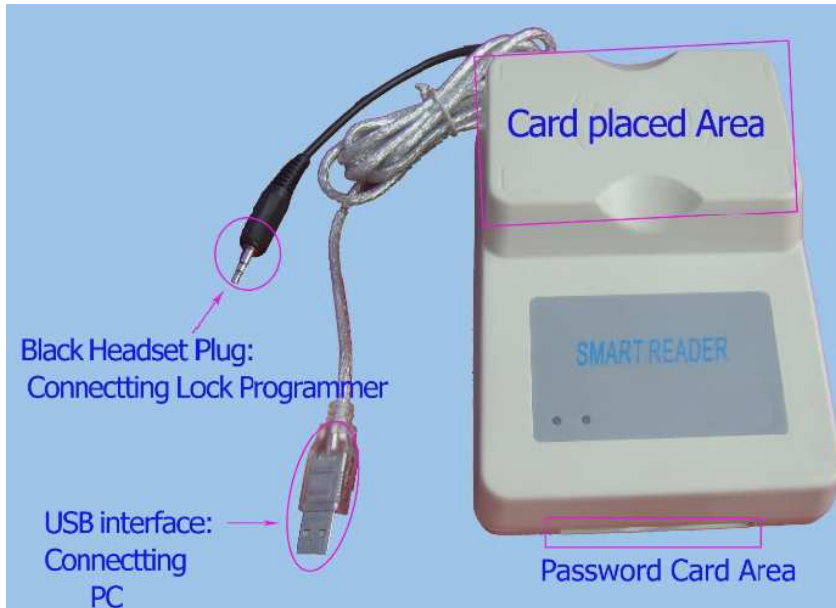
User Manual

Operation System

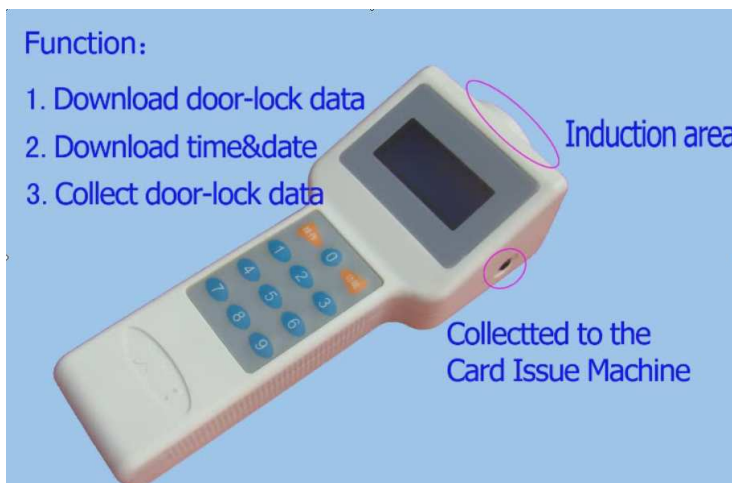
Windows 98 ;Windows XP ;Windows 7

Device Profile

To realize Hotel Management with management software,the Card Issuing machine (Encoder)



and the Lock Programmer



are necessary ,the function of the Card

Issuing Machine (Encoder) is issue the Guest Card and Staff Card .

The interfaces and card placed area of the Card Issuing Machine(Encoder) are marked, The black headset plug is connected with the Lock Programmer ; USB interface is connected with PC ;the card placed area is for placing the guest card and staff card during issuing card ,Password card placed area is for inserting the

staff password card .

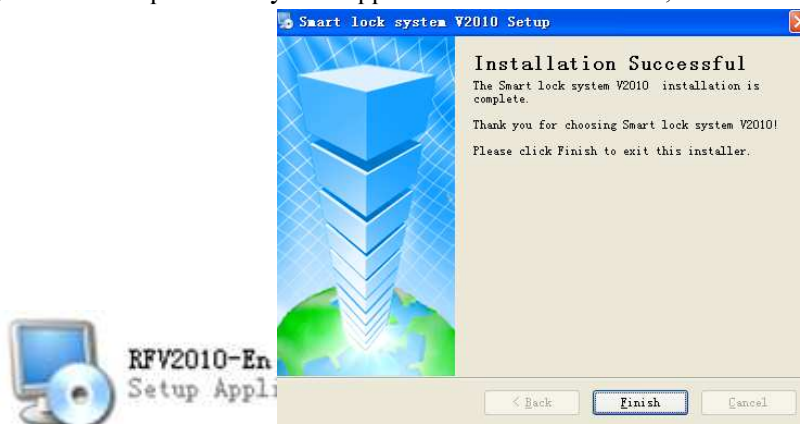
The function of Lock Programmer:

- ◆ Download room data to locks ;
- ◆ Download time to locks ;
- ◆ Collecting the date from locks to programmer,

The black headset jack is connected with the Card Issuing Machine(Encoder) ,induction area:the induction area should be directed toward the door lock induction area ,making sure the communication successful.

Software installation

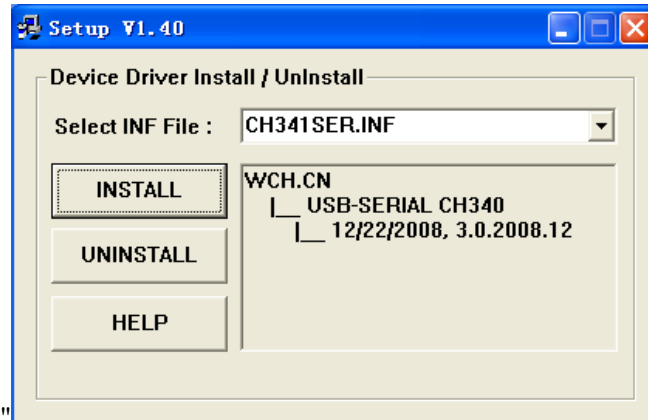
- 1). Put the CD provided by the supplier into CD-ROM driver, run the installation file Setup.exe



in the CD and implement installation according to suggestions.



- 2). Finish software installation ,install card issue machine driver ;click "Install W-R



reader USB Driver"; click "INSTALL" to install

the Card Issuing Machine driver, finish installation, click OK ,Door lock management software must

cooperate with Card Issuing Machine, connect the card issuing machine with Computer; System will find a

new hardware; and pop up the window of "Found new hardware Wizard", click next to install driver

program ,install driver success; Notice: Blue Led is allways on;card issuing machine can work normally,

The usb interface connected with card issuing machine can't be changed; otherwise you need to install

driver program again

Software function introduction

1. Setting Additional features

Now start the door lock management software,click the menu "Start" -> "All Programs" -> "Smart

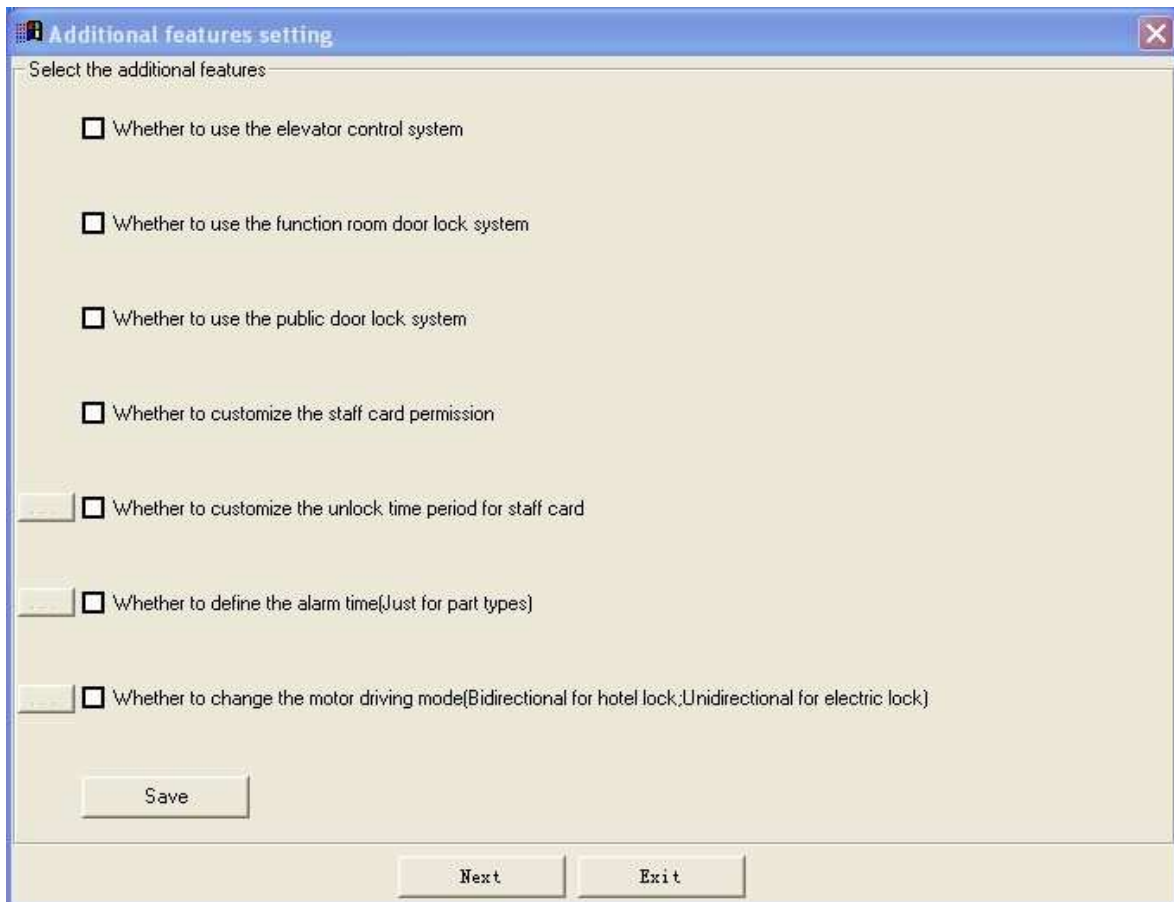
lock system V2010", and then click "Smart lock system V2010" ,or double click the icon



“Smart lock system V2010” on the desktop to run Door Lock Management System, Scanning the card issuing machine,pop up message:the software has detected the card issuing machine; click ok,software opened.

If you want to change the Additional features setting in the future,please click System menu “System Setting” -> “Setting Additional features”.

see below:



The first time you start the software,you need to set the Additional features setting,Only the function you selected,the function menu will be displayed.

◆ Whether to use the elevator control system

The lift Control System is a special system module to control hotel lift,combine with Door Lock System.The guest use his/her room cardkey to use the correct lift floor,the maximum lift floor is 48.

Select this option,you can set the lift information on the lift setting window;if no selected,the lift setting window will don't display.

◆ Whether to use the function room door lock system

The Function room System is a special system module to control hotel room except guest room,combine with Door Lock System,such as chess room, Gymnasium and other special rooms.Guest can open these function room with guest room cardkey to consume.

Select this option,you can set the function room information on the function room setting window;if no selected,the function room setting window will don't display.

◆ Whether to use the public door lock system

The Public door lock System is a special system module to control hotel Public door lock,combine with Door Lock System,Public door lock include hotel entrance door,entrance for each floor,entrance for villas.Guest can open these Public door with guest room cardkey.

Select this option,you can set the Public door lock information on the Public door lock setting window;if no selected,the Public door lock setting window will don't display.

◆ Whether to customize the unlock time period for staff card

Customize staff cardkey unlock period of time,The default unlock period of time is whole time(24 hours) after installation,that is the cardkey can open the door at anytime during valid time.When the hotel need to define special unlock period of time for staff card,such as the cleaner use the floor cardkey or other staff permit to open door only work time,this function is very necessary ;the system supports eight period of time.

◆ Whether to customize the staff card permission

The system can identify guest cardkey,floor card and Master cardkey automatically after the software installed.If the hotel want to issue special cardkey,such as staff cardkey,the staff cardkey can open part of hotel rooms,but these Rooms are not on the same floor, this is ned to use the function of customize staff card permission.

Select this option,you can set the staff card permission on the customize staff card permission setting window;if no selected,the function of customize staff card permission will be invalid.When you set customize staff card permission,you need to download the lock data again and reset the lock data,otherwise the customize staff card permission kadkey can't open the door.

◆ Whether to define the alarm time(Just for part types)

Intelligent alarm indication:If the door not be fully closed after the door unlocked, the lock will alarm to indicate guest or waiter to close the door well,you can set the alarm time.

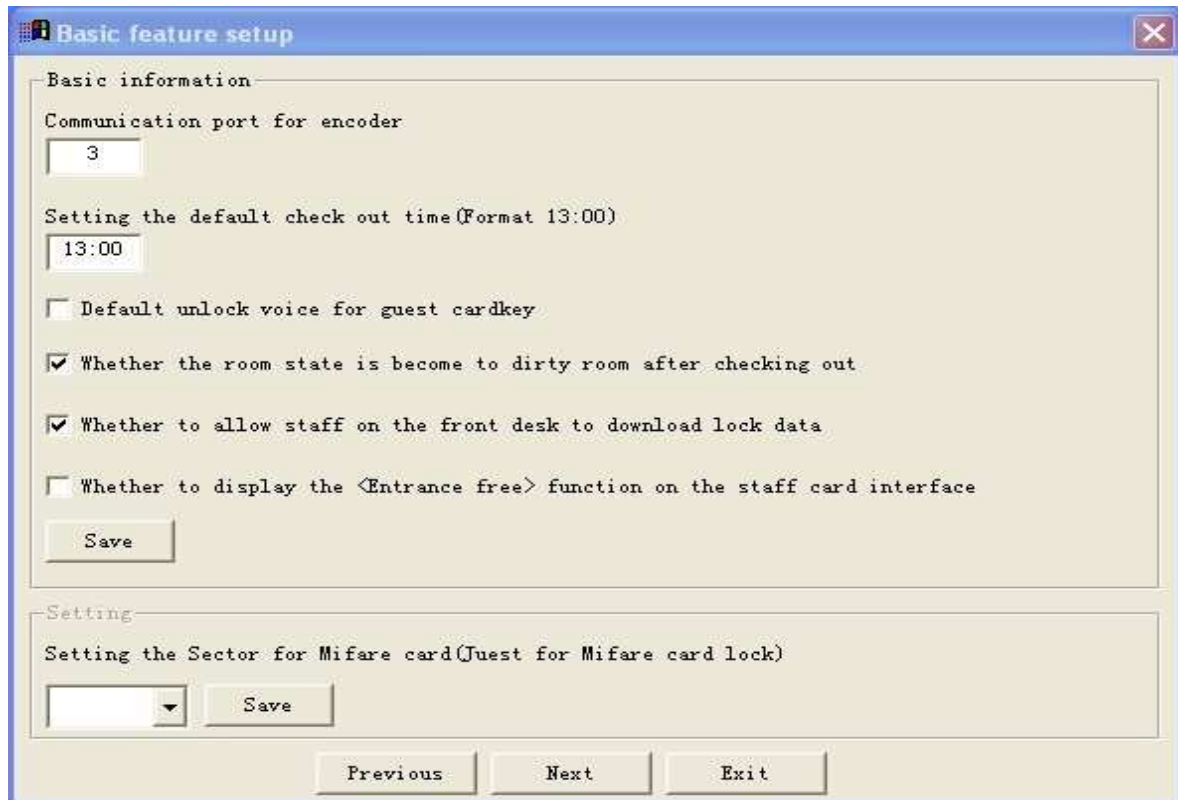
◆ Whether to change the motor driving mode(Bidirectional for hotel lock;Unidirectional for electric lock)

Setting Motor working way:don't change this option please,this option need to be changed for other

special function lock(Bidirectional for hotel lock;Unidirectional for electric lock),default is Bidirectional.

Selected the function,click “Save”,then click “Next” continue:

2. Setting Default Information



◆ Communication port for encoder

The port number of the card issue machine is displayed,don't change this.

◆ Setting the default check out time(Format 13:00)

The default check out time is 13:00,if you need to change this time,please input the new time

◆ Whether the room state is become to dirty room after checking out

◆ Default unlock voice for guest cardkey

If you choose this option, unlock with Guest card key,the lock will give a sound notice, otherwise sound notice will be not given

◆ Whether to allow staff on the front desk to download lock data

This option was selected,the operator can download door lock data to lock programmer

◆ Whether to display the <Entrance free> function on the staff card interface

The first time install the door lock system,there is not entrance free function in the staff card window,if

you need this function ,select this option and save.The door lock can be set the entrance free mode using the staff card with entrance free function, door can be unlock at any time without any card, used in Meeting Room,Office , ect..

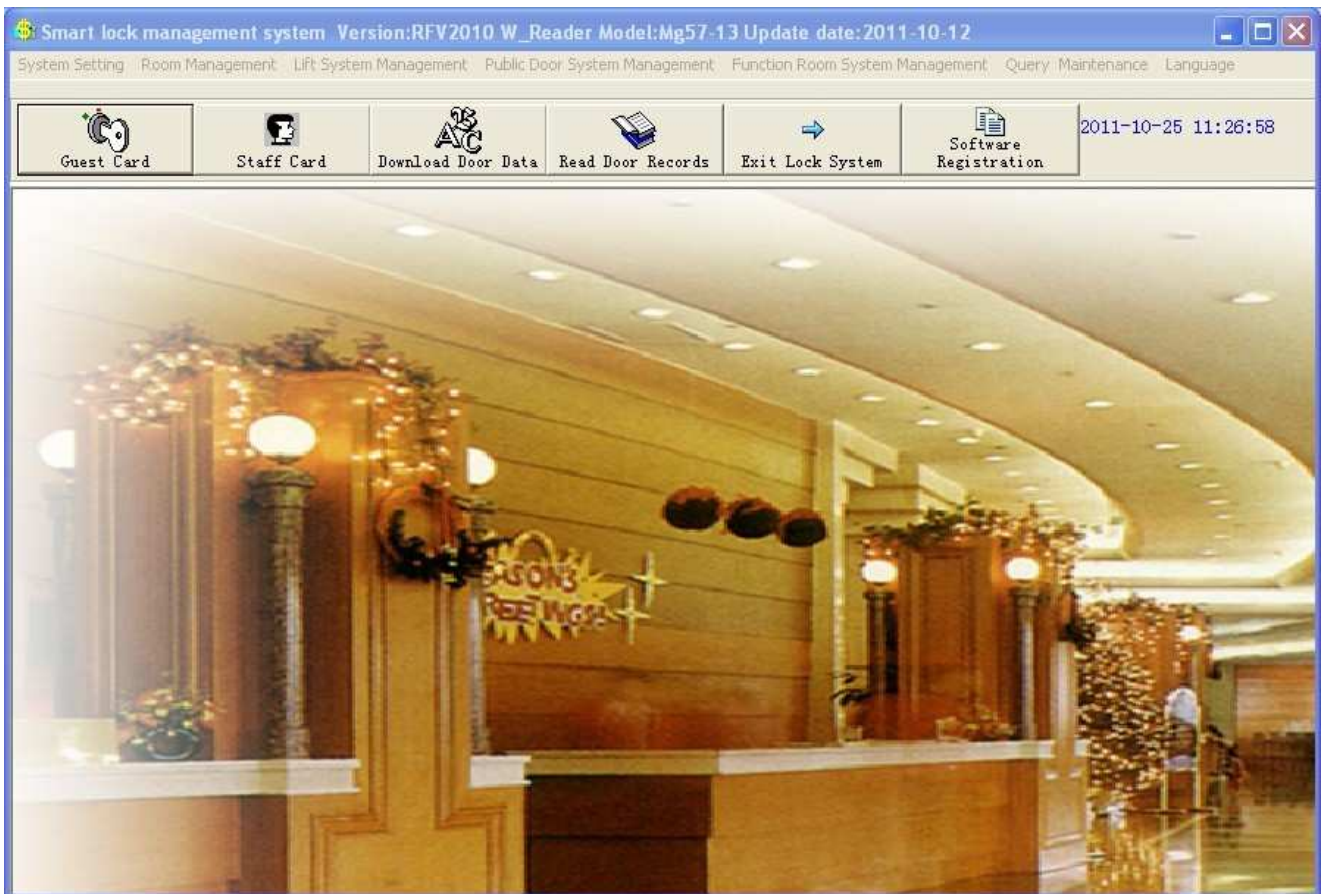
◆ Setting the Sector for Mifare card(Juest for Mifare card lock)

This option is effective for Mifare Card issue machine,contact with your supplier and get the right sector number,just Mifare card lock system need to use this option.

If you want to change the Additional features setting in the future,please click System menu “System Setting”-> “Setting Default Information”.

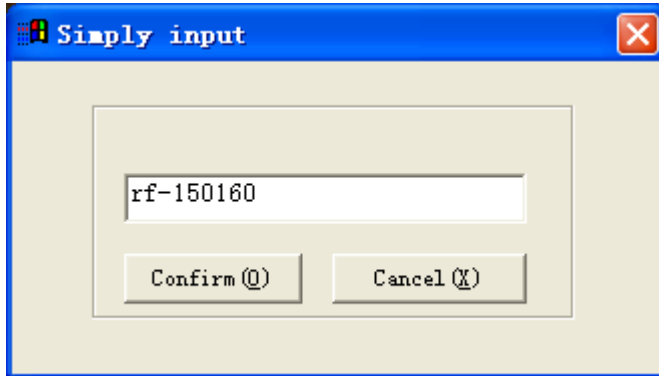
Selected the function,click “Save”, then click “Next” continue.

3. Software Introduction



This is the software interface with all function,please set the option according the actual situation.

Then press **Query _Maintenance** and choose “Shortcuts” enter the interface



Pls key into Register code: rf-150160 and press the button “OK”.

System Setting

- ▶ Setting Default Information
- ▶ Setting Operator Information
- ▶ Change Operator Password
- ▶ Setting Hotel Name
- ▶ Setting Additional Features
- ▶ Exit

Room Management

- ▶ Setting Building Number
- ▶ Setting Floor Number
- ▶ Setting Room Type
- ▶ Setting Room Number
- ▶ Customize Staff Card Permission
- ▶ Make Emergency Management Card

Lift System Management

- ▶ Set Lift Number
- ▶ Set Lift Controller
- ▶ Make lift port setting card
- ▶ Make lift control card

- ▶ Set default effective lift floor for guest cardkey

Public Door System Management

- ▶ Set Public Door Number
- ▶ Set Public Door Associate

Function Room System Management

- ▶ Set Function Room Number

Query & Maintenance

- ▶ Shortcuts
- ▶ Query Latest records
- ▶ Query Cleaned records
- ▶ Maintain Records
- ▶ Restore door lock system data

Language

- ▶ Simplified Chinese
- ▶ English

There are 6 buttons on interface:

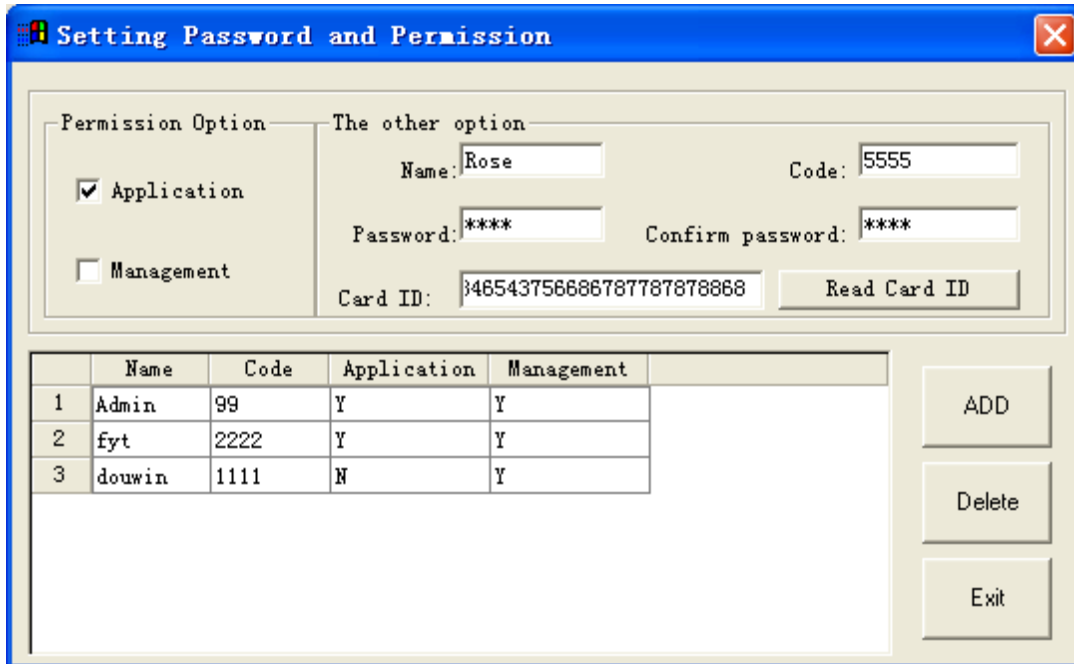
Guest Card **Staff Card** **Download Door Data** **Read Door Records** **Software Registration** **Exit Lock System**

4. System Menu Introduction

System Setting

▶ Setting Operator Information:

Click System menu “System Setting” -> “Setting Operator Information”:



When the

software was installed, there was a default operator, the password is :9999. You can add new operator, input the new operator information:

Name: Support letters, numbers, punctuation, and special character

Code: Support letters and numbers

Password: Support letters and numbers

Permission: Application for staff to operator; Management for administrators.

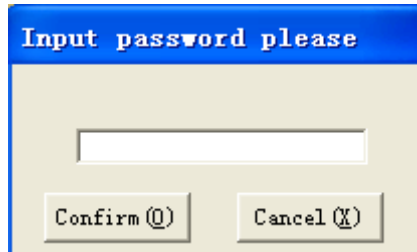
If you want to make a staff password card, please insert one RF Card into Encoder



from the bottom; click the button "Read card ID", select the permission, you can select both Application and Management, then click "Add", a new operator add

success.

If the operator don't insert the Working card(password card), he should key into his



password to continue operation.

Note: "Admin" is the original "hotel manager"(password: 9999)of the system. Anyone can enter the system without password . In order to ensure security, please set a password after the new "hotel manager" has been added.

Note: Before the Reception waitress is set, the "hotel Manager" should be set firstly.

► Change Operator Password:

Click System menu "System Setting" -> "Change Operator Password":



Please input the password you want to change,then input the new password two times.

Click "Modify",if the password modify success,message "Password changed,please quit the software and login again" will be display.

► Setting Hotel Name

Click System menu "System Setting" -> "Setting Hotel Name",Input the hotel Name,Click "OK"

Room Management

► Setting Building Number

Click System menu "Room Management" -> "Setting Building Number"

	buildg number	Build Description
1	1	East
2	2	West

Build number

Build Description

Add Modify Delete Exit

Build number: Input the building number,begin from 1,there is 1 build for most hotels.

Build Description: Input the description ,empty is ok.

► **Setting Floor Number**

Click System menu "Room Management" -> "Setting Floor Number"

	Build number	Floor number	Floor Description
1	1	6	6TH
2	1	5	5TH
3	1	4	4TH
4	1	3	3RD
5	1	2	2ND
6	1	1	1ST

Build number
1

Floor number

Floor Description

Add Modify Delete Exit

Build number: Select the build number

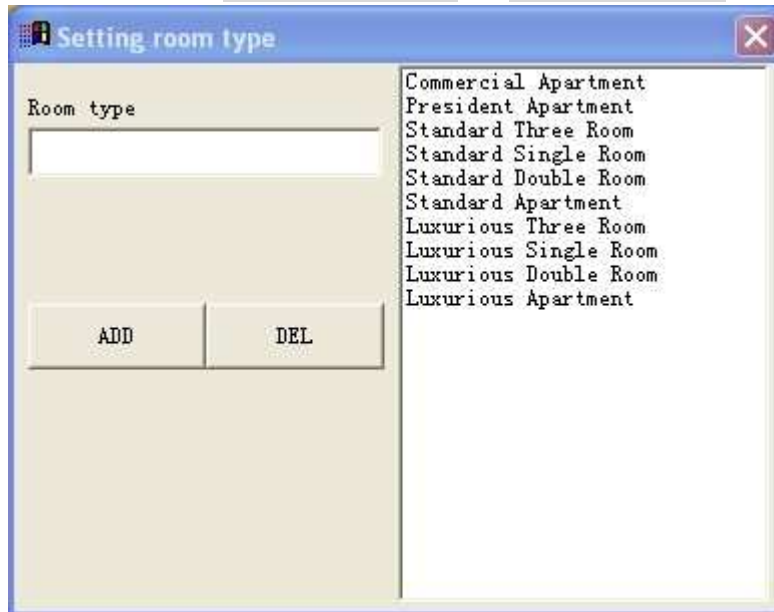
Floor number: Input the floor number, begin from 1

Build Description: Input the description ,empty is ok.

Click “Add” will add the floor.

► **Setting Room Type**

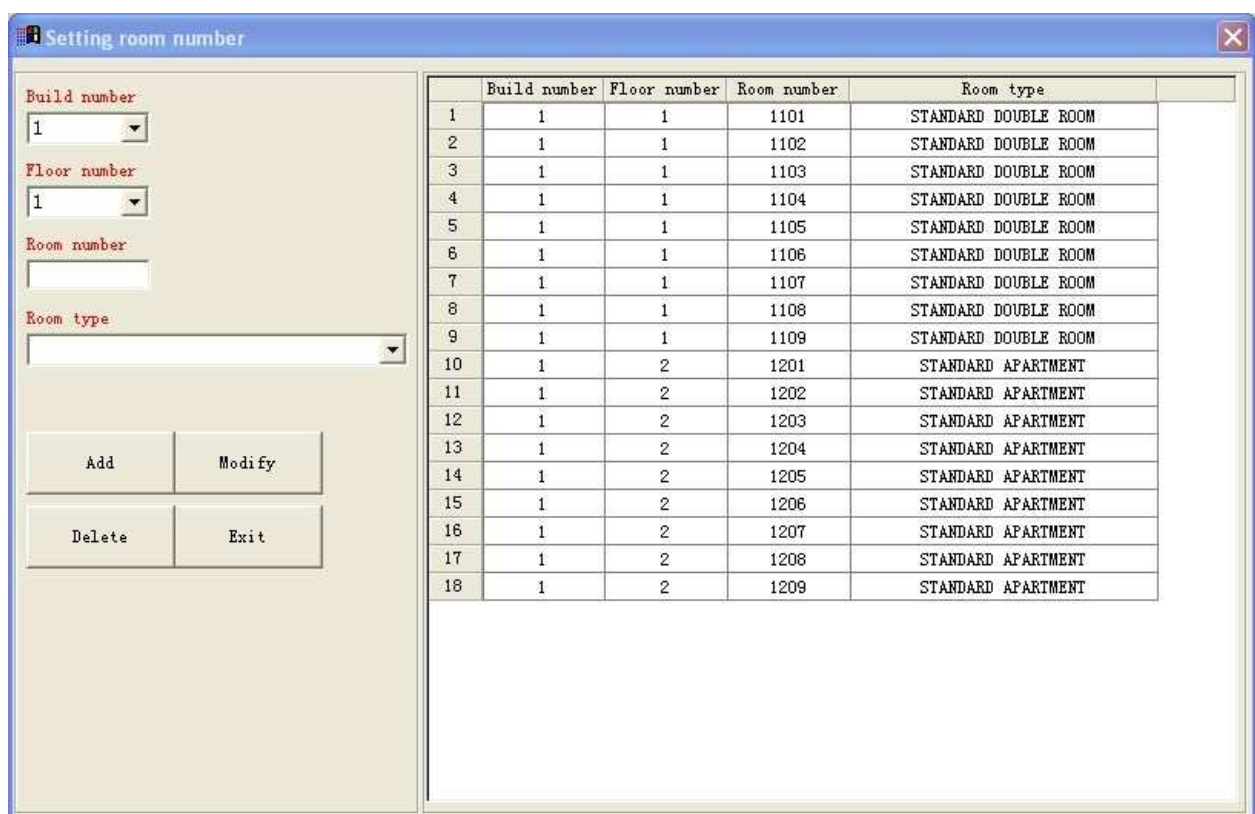
Click System menu “Room Management” -> “Setting Room Type”



When the software was installed, there was some default room types, you can delete and add.

► **Setting Room Number**

Click System menu “Room Management” -> “Setting Room Number”



Build number: Select the build number

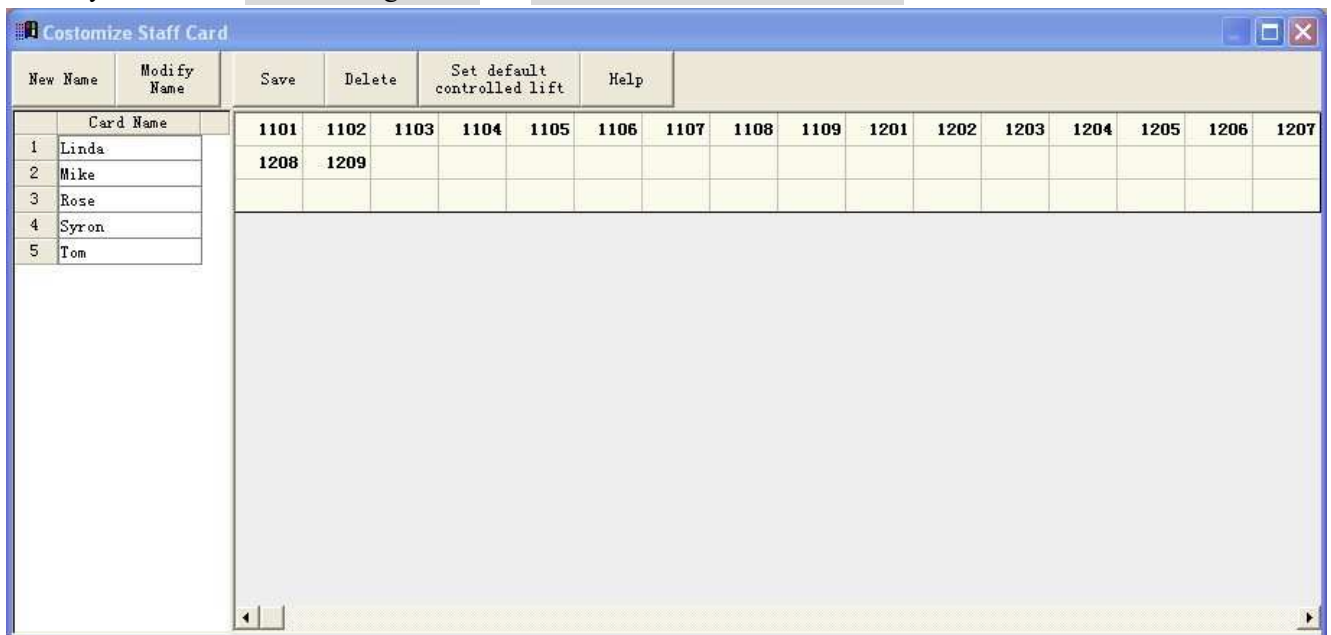
Floor number: Select the floor number

Room number: Input the room number,you can add the romm number one by one,you can add many continuous room numbers,For instance: 1101-1109,then you can add 10 room numbers at one time.

Room Type: Select the room type from the list.

► Customize Staff Card Permission

Click System menu “Room Management” -> “Customize Staff Card Permission”

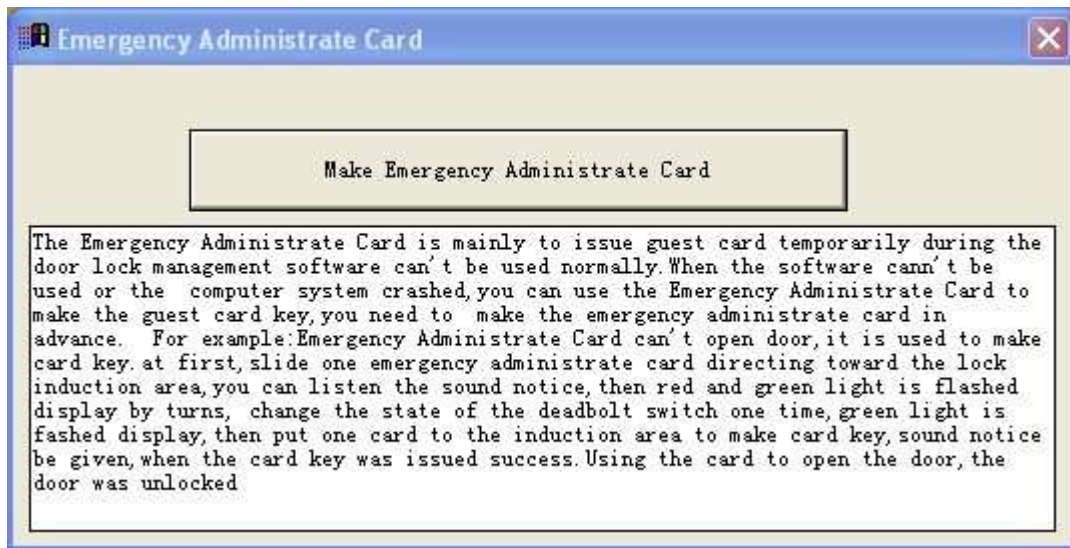


Click "New Name" ,Input the staff card name ,then click “Confirm”, the added Card name will display on the left window ;then define the permission; Click the card name, then select the room numbers and public gates that the Card can unlock from the right window(The rooms selected will become red), click the button “Save” to save the Staff card permission, you can define the staff card type according the actual situation.

If the hotel use DOUWIN lift controller ,you can select the staff card name ,then click the button “Set default controlled lift” to set the lift information.

► Make Emergency Management Card

Click System menu “Room Management” -> “Setting Room Number”



Click the button “**Make Emergency Administrate Card**” to issue card.

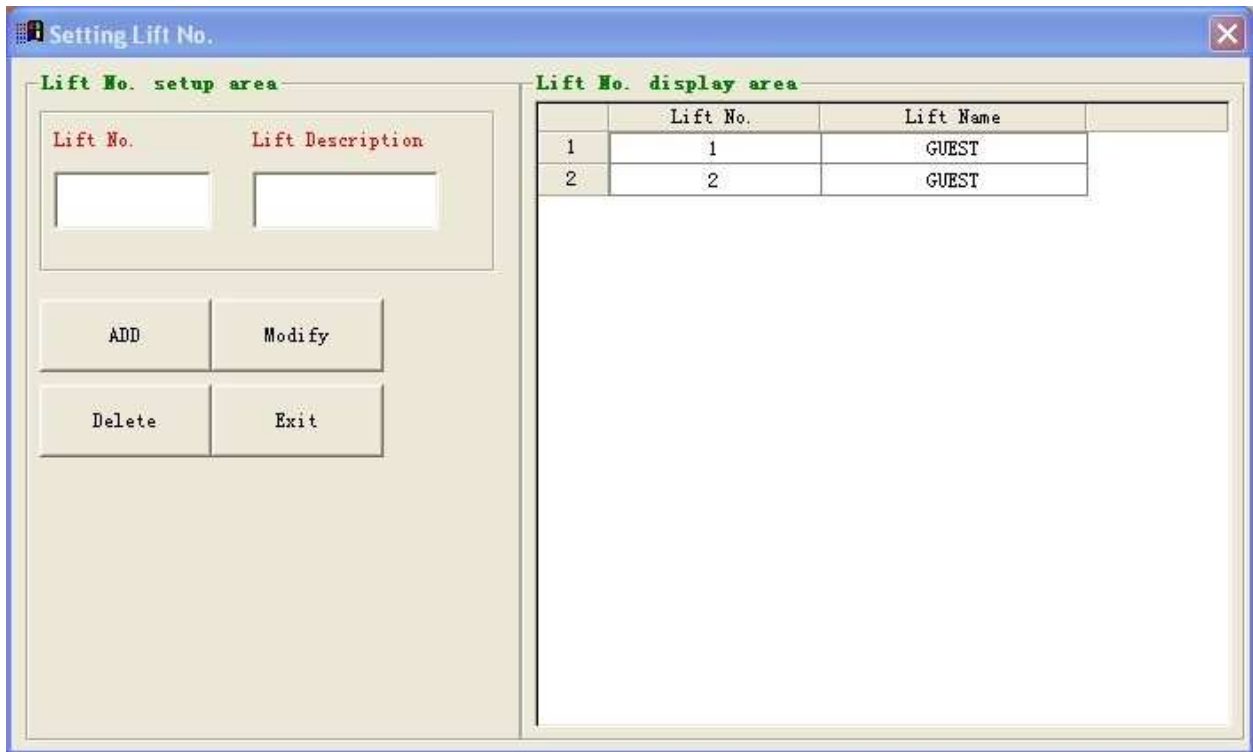
The emergency administrate card is used to issue guest card key without the lock management software , the emergency administrate card is mainly to issue guest card temporarily during the door lock management software can't be used normally .When the software can't be used or the computer system crashed ,you can use the emergency administrate card to make the guest card key ,you need to make the emergency administrate card in advance.

For example :Emergency Administrate Card can't open door ,it is used to make card key .at first ,slide one emergency administrate card directing toward the lock induction area ,you can listen the sound notice ,then red and green light is flashed display by turns, change the state of the deadbolt switch one time ,green light is flashed ,then put one card to the induction area to make card key ,sound notice be given ,when the card key was issued success .You can unlock with this card.

Lift System Management

► Set Lift Number

Click System menu “Lift System Management” -> “Set Lift Number”



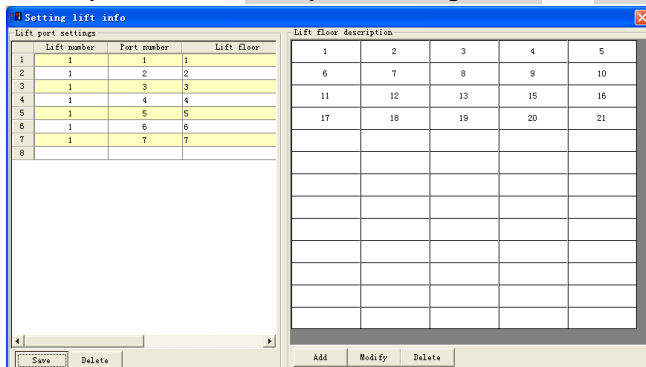
Lift No.: Input the Lift number, the lift number can't be the same with room number; Suggest to use 1,2,3 and so on..

Lift Description: Input the description, empty is ok.

You can modify or delete lift number.

► **Set Lift Controller**

Click System menu “Lift System Management” -> “Set Lift Controller”



Make guest card key

Click the button “Guest Card”

The default arrival time is the current system time,if make a reservation card,select the option reserve,you need to input the arrive time,input days,one day default,input the guest information,finished,click select the function room,if you select one function room,the guest card can open the function room,if there is lift information,please select lift floor,finished setting:click "Write card";place one RF card on the card placed area of card issuing machine,card issue success will pop up message.

Make staff card key

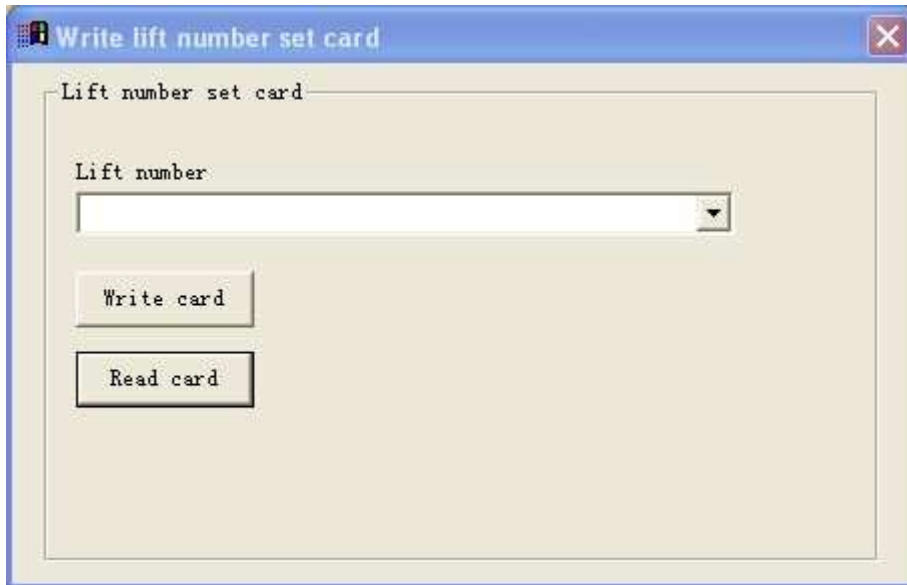
Click the button “Staff Card”

Add lift floor Click the button “Add” to add the lift floor,you can use 1,2,3...means 1ST floor,2ND floor,3RD floor;you can use A1,A2,A3...means 1ST floor,2ND floor,3RD floor,you can use any expression ,if you have 10 floor lift,you need add 10 expression to express 10 floor. **Notice:**the same expression is the same lift floor(If there is 2 lifts,you can use the same expression for different lift)

Set lift port Click the box “Lift number”,select the lift number, the lift port number(1~48) will be display,double click the port number,then double the lift floor on the right window,then click “Save”.Suggest:use the port 1 control 1ST floor,port 2 control 2ND floor,and so on.Set all the lift floor and port information according this method.

► Make lift port setting card

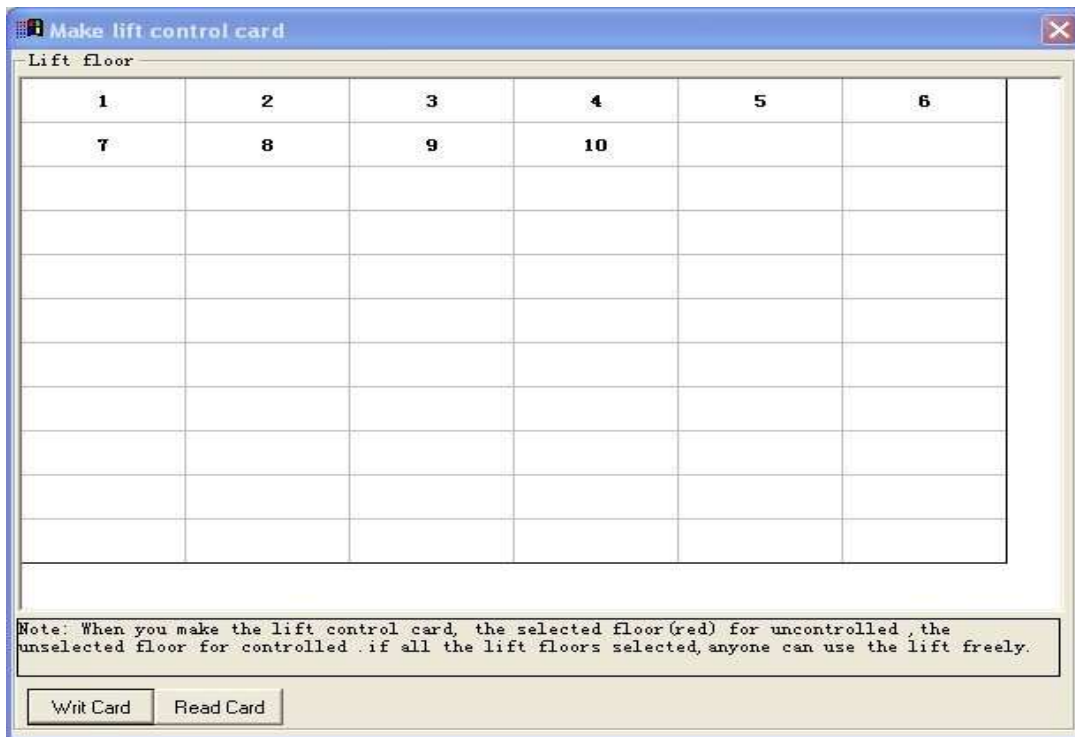
Click System menu “Lift System Management” -> “Make lift port setting card”



Select one lift number before making card,click "Write card",the Lift port setting card will record the mapping relationship of lift floor and controller port ,the card should be run on the elevator, then use this card wipe the controller one time. .

► **Make lift control card**

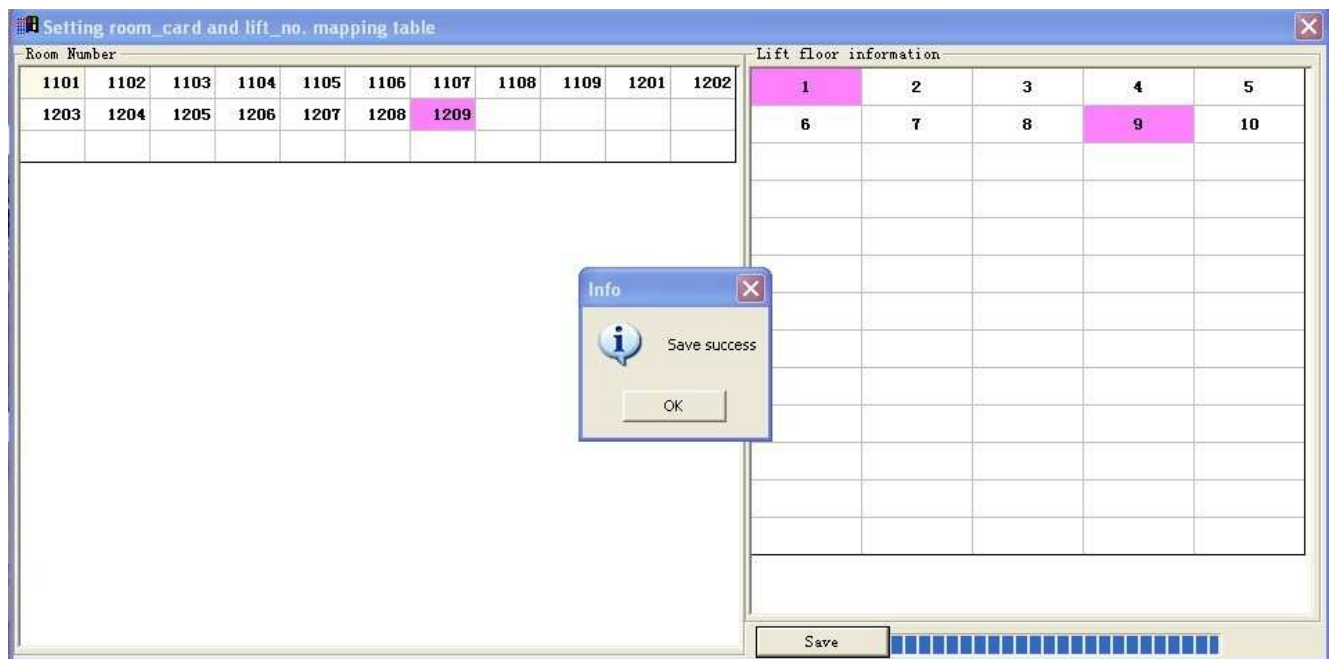
Click System menu "Lift System Management" -> "Make lift control card"



Note:The elevator floors will be controlled for default after finished installation, if all the elevator floors will be controlled, select none floor and make the control card;if all the elevator floors will be not controlled,select all,then click "Write Card".If you want 1 to 5 floor to be controlled,and 6-10 floor to be not controlled,select 6-10 (become red),then click "Write Card", the card must be run on the elevator, then use this card wipe the controller one time.

► **Set default effective lift floor for guest cardkey**

Click System menu "Lift System Management" -> "Set default effective lift floor for guest cardkey"



Room number display on the left window;

Lift floor display on the right;

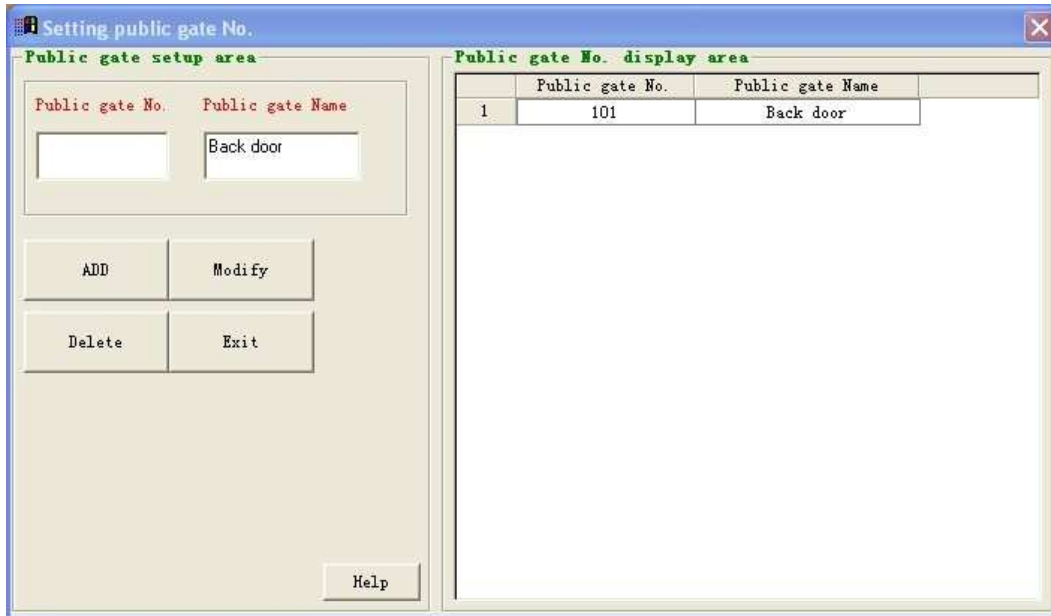
Select the room number on the left window,then select the lift floor on the right window,then click "Save",the guest room card can use the lift floor selected(red).

For instance:Click room 1209,then click 1 floor and 9 floor,the room card for 1209 can use the lift 1st floor and 9th floor default,when you make the guest card,you can change on "Guest card" interface.

Public Door System Management

► **Set Public Door Number**

Click System menu “Public Door System Management” -> “Set Public Door Number”

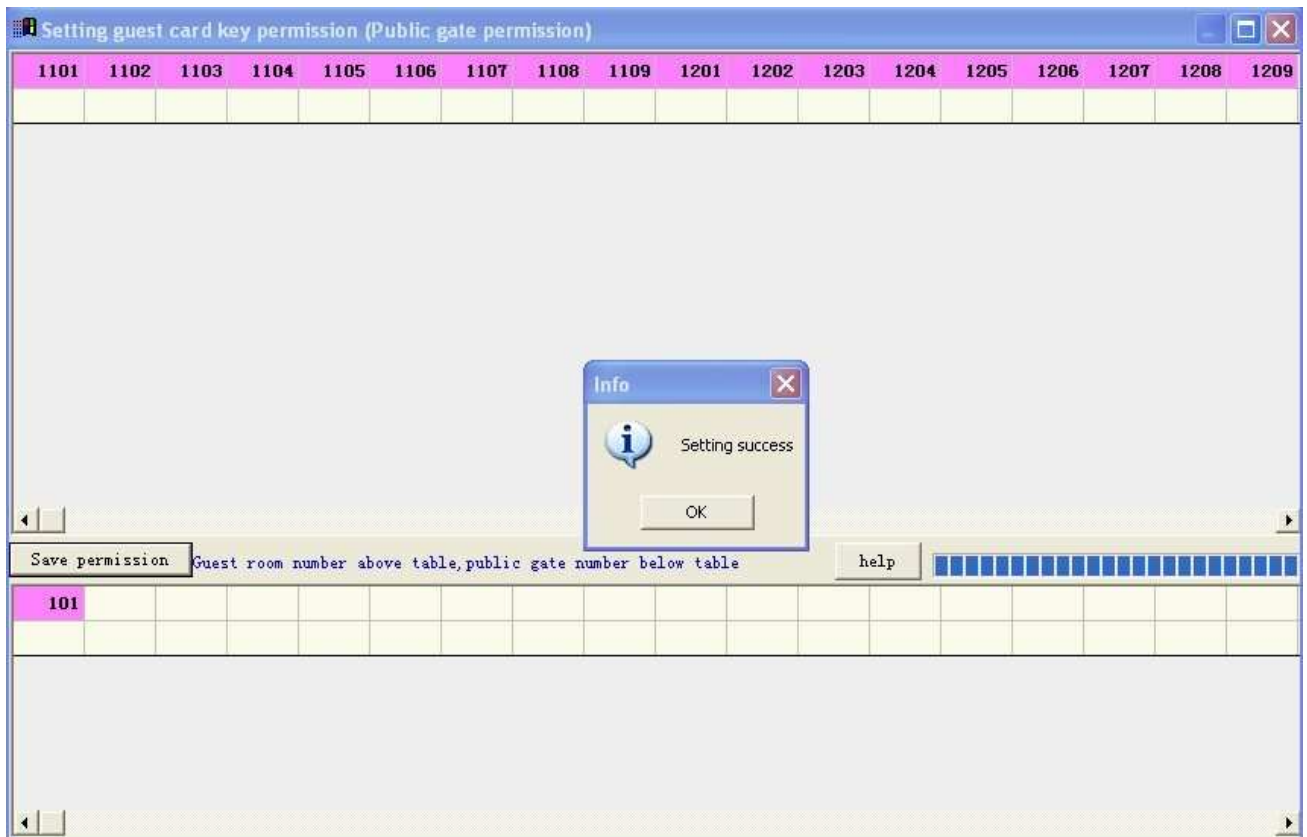


Public gate No.: Input the public gate number, the number can't be same with room number;

Public gate Name: Input the public gate name.

► **Set Public Door Associate**

Click System menu “Public Door System Management” -> “Set Public Door Associate”



In the table ,you can see two display areas ,the guest room number are displayed in the above, the public gate number are displayed in the below ;

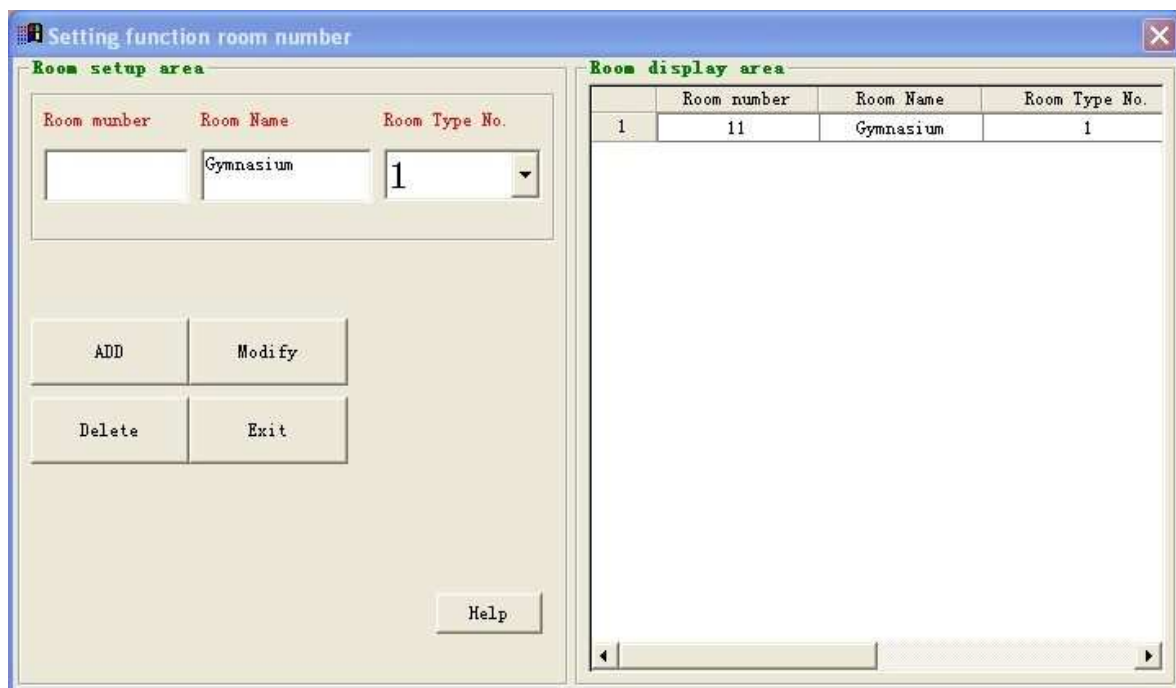
Select the public gate number in the below; then select the guest room numbers, the number will become red; then click "Save permission";all the selected room number card can unlock the public gate.if no selected,can't unlock the public gate.

You can double click the public gate number to check the permission, if you want to change the permission; change the permission; then click "Save permission";

Function Room System Management

► Set Function Room Number

Click System menu "Function Room System Management" -> "Set Function Room Number"



Room number: Input the function room number,the number can't be same with guest room number;

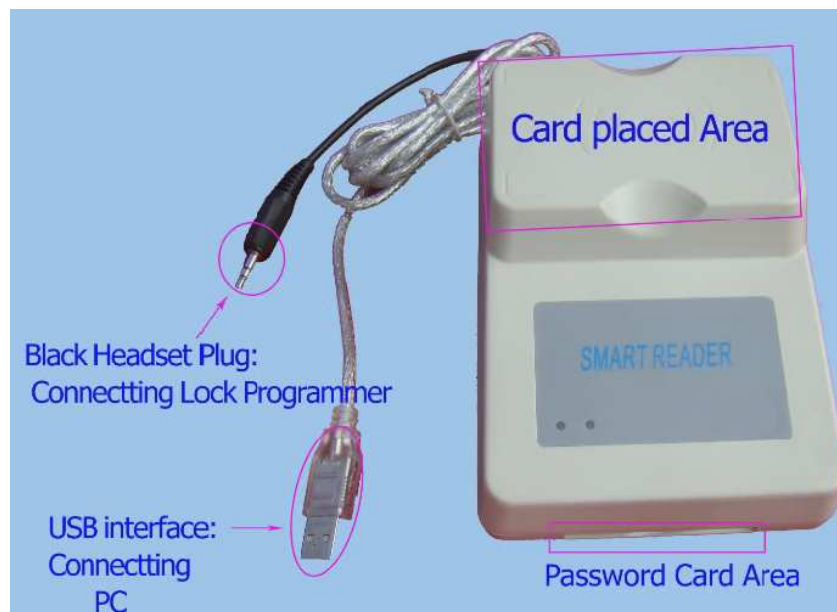
Room Name: Input the function room name,for instance:Gymnasium,Dinning Room

Room Type No.: Select the Room Type No.,8 types function room supported

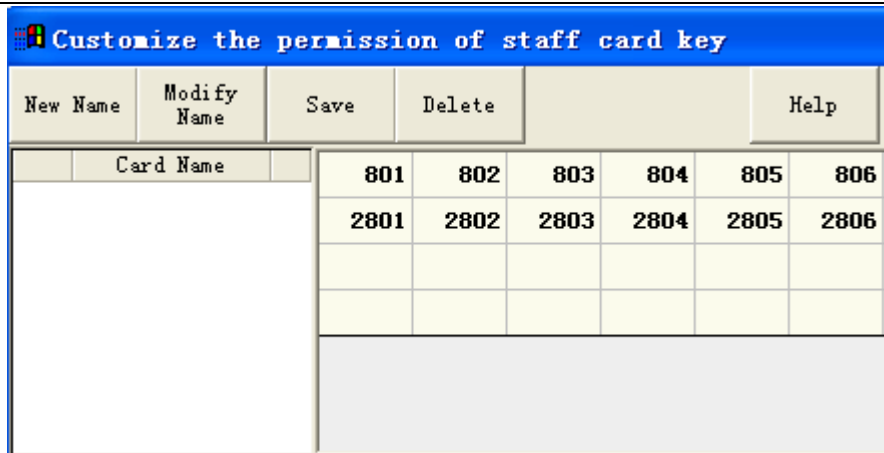
Check all the function rooms information in the room display window,you can add,modify or delete.

Program for door lock

After you finish the above steps, Pls check your computer time is correct. Then connect the Portable Programmer



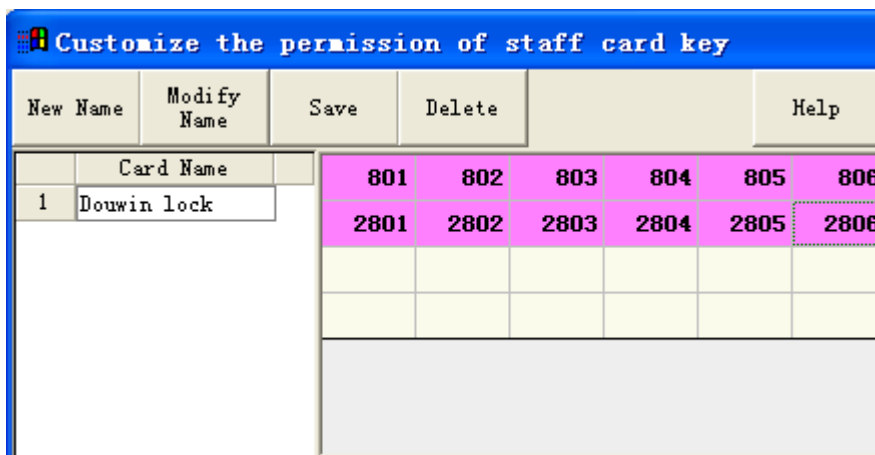
with Encoder, Press the column of "Room Management" choose the functional module of "Customized Staff Card key permission setup" and press "Staff card permisssion setup" to enter the following interface .



Pls press the button  enter



Press the button "Confirm"



pls choose all the

rooms and it became pink. Then press the button

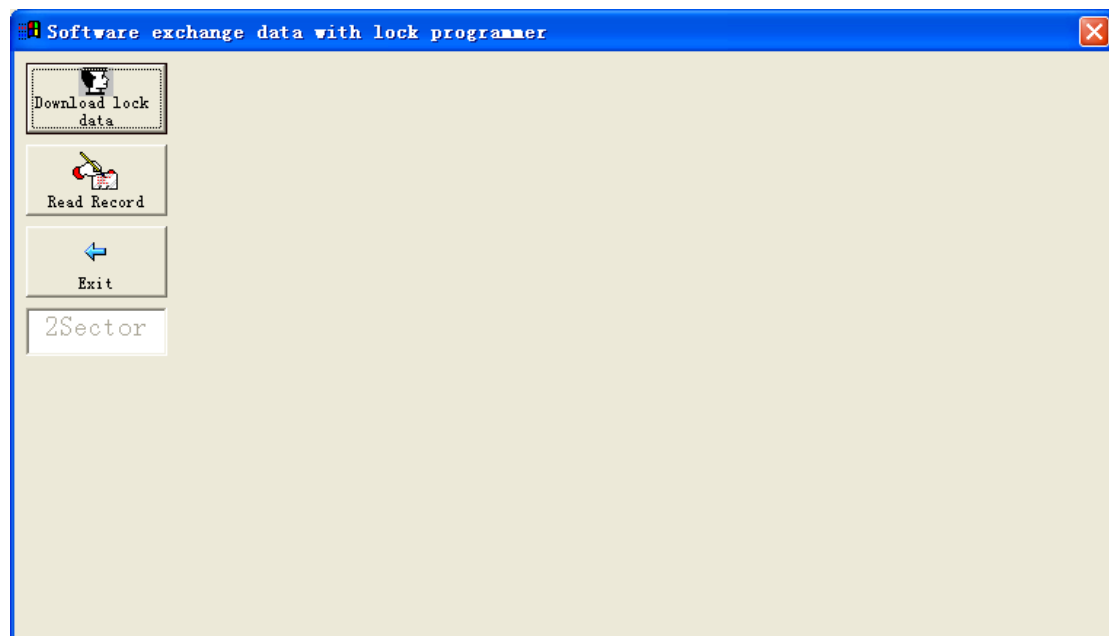
Save

and

是(Y)

then

press





And press all the data(such as computer time, room numbers,etc) is saved in



this programmer device. Then you use this device program all the locks step by step as follows:



A. Press the button "Func" the screen show as "DOWNLOAD LOCK DATA", then press "Oper", the screen show as "ENTERING ROOM NO", pls key into the Room number, for example "801", then use this device point and touch to the door lock black window and press the




button "Oper". after display message "TURN KNOB" the lock



sounds a "di", pls turn the deadbolt button of the lock one time. Thus, this lock belong to Room number "801". Pls do it for all the locks one by one.



B. Press the red button "Func" of , then press the black button "Oper", the screen show as "DOWNLOAD TIME", then you can use this device point and touch to the door lock black window and then press the black button "Oper", the door lock will save the computer time.




you must do it for all the locks one time.

Open door record

(such as who opened this lock?which card?when?,etc) is displayed on the computer screen.



Pls press the button "Func" of , the screen shows as "R=-----, V=6.0, DATE,TIME", then press "Oper" and the screen shows as "COLLECT DATA", then use this device point to the



door lock black window

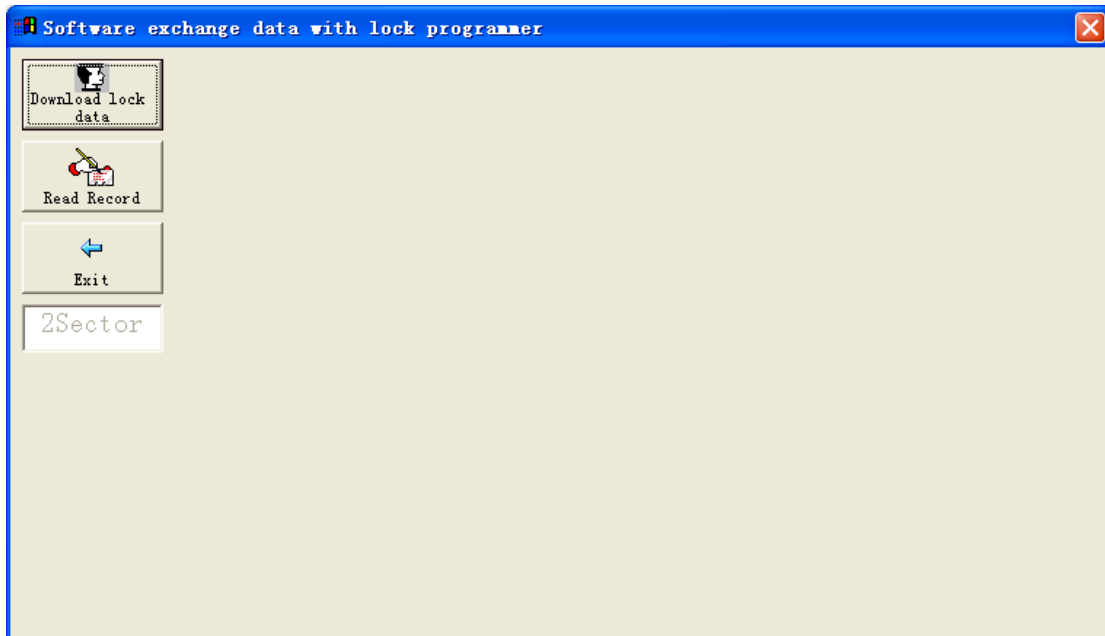
press "Oper" use Portable Programmer



collect open data from the target lock and then connect Portable Programmer with



Encoder and press



And press

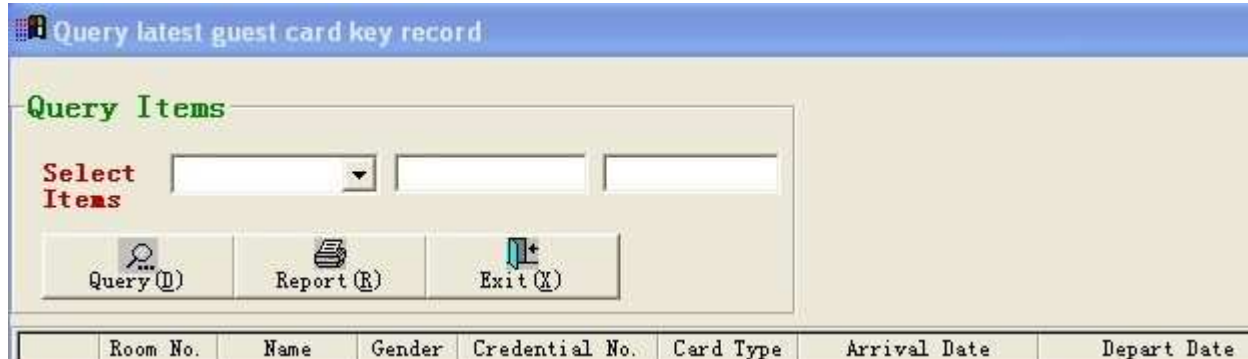
all the open door data(such as who?which card?when?,etc) is

displayed on the screen.

Query & Maintenance

► Query Latest records

Click System menu “Query & Maintenance” -> “Query Latest records”

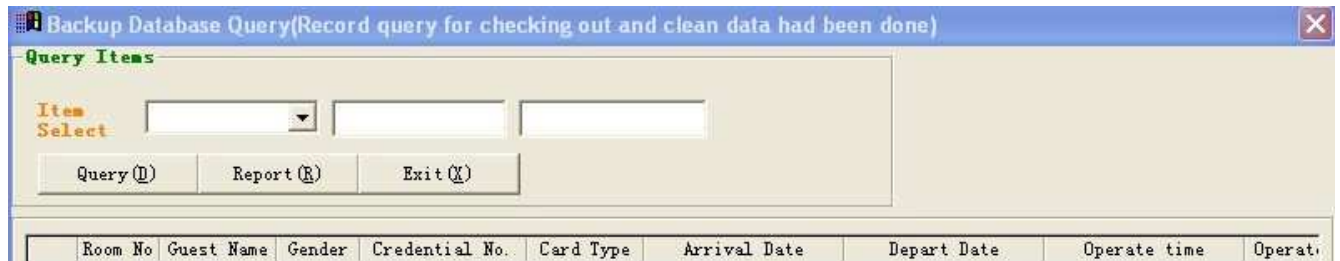


The screenshot shows a software window titled "Query latest guest card key record". It features a "Query Items" section with a "Select Items" label and three input fields. Below the input fields are three buttons: "Query (Q)", "Report (R)", and "Exit (X)". At the bottom of the window is a table with the following columns: Room No., Name, Gender, Credential No., Card Type, Arrival Date, and Depart Date.

Four query items can be chosen: Room number ,Operator ,Operate time and All ;selected one item; input query value; click "Query", the records according to the query item will be displayed in the below display window; click "Report", you can print the records information

► Query Cleaned records

Click System menu “Query & Maintenance” -> “Query Latest records”



The screenshot shows a software window titled "Backup Database Query(Record query for checking out and clean data had been done)". It features a "Query Items" section with an "Item Select" label and three input fields. Below the input fields are three buttons: "Query (Q)", "Report (R)", and "Exit (X)". At the bottom of the window is a table with the following columns: Room No, Guest Name, Gender, Credential No., Card Type, Arrival Date, Depart Date, Operate time, and Operat.

This query operate is used for Back up database ,four query items can be chosen: Room number ,Operator ,Operate time and All ;selected one item; input query value; click "Query", the records according to the query item will be displayed in the below display window; click "Report", you can print the records information

► Maintain Records

Click System menu "Query & Maintenance" -> "Maintain Records"



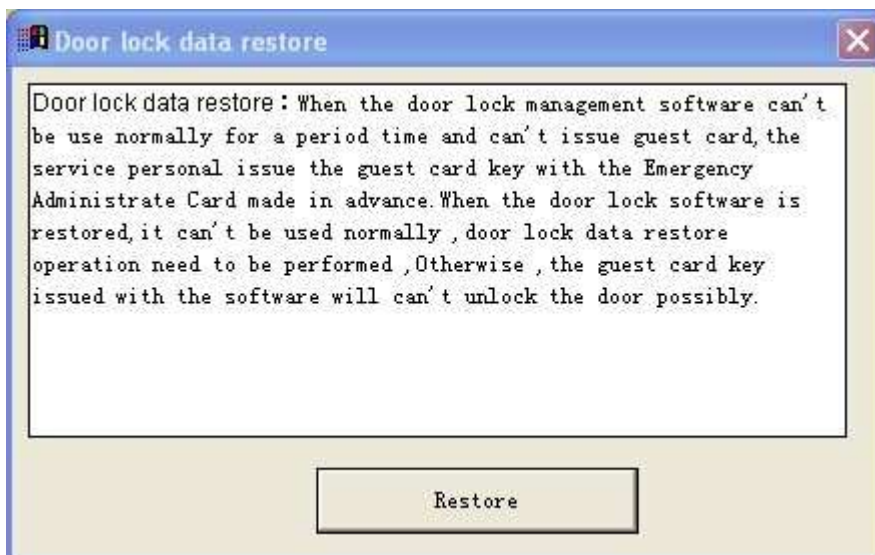
Initial database: Clean up the latest issue card key records, restore database to original state; this operation don't suggested.

Clean database: Clean up the issue card key records that checking out had been done, and save the cleaned records to the backup database at the same time

Clean Backup: Clean up all the records before the specified date, once the operation executed, the data can't be restored

► **Restore door lock system data**

Click System menu "Query & Maintenance" -> "Restore door lock system data"



When the door lock management software can't be use normally for a period time and can't issue guest card ,the service personal issue the guest card key with the Emergency Administrative Card made in advance.When the door lock software is restored ,it can't be used normally ,door lock data restore operation need to be performed ,Otherwise ,the guest card key issued with the software will can't unlock the door possibly.

Language

► Simplified Chinese

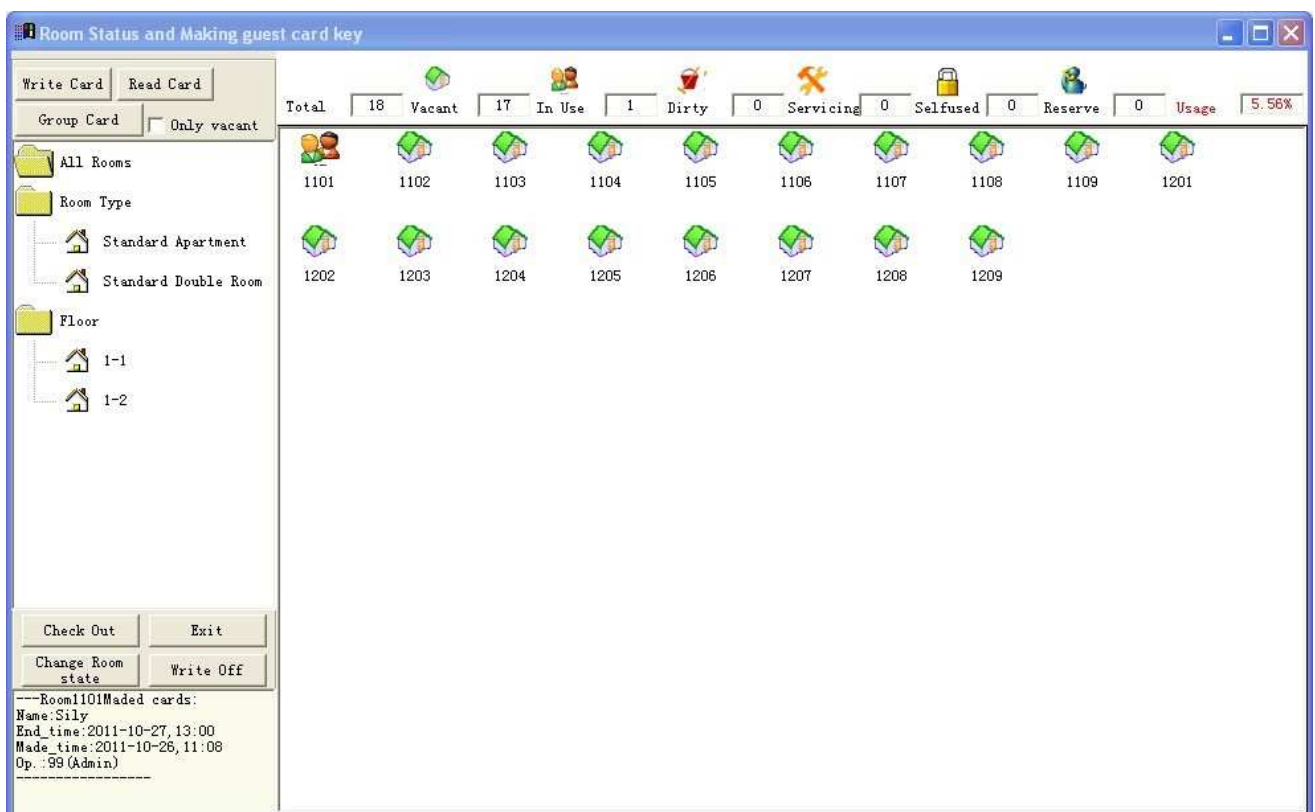
► English

The Door lock management software support two languages:Chinese and English,you can switch the language between Chinese and English

5.Buttons Introduction on interface

Guest Card

Click the button "Guest Card", see the below window:



the room state are displayed with different icon,seven buttons on this interface

Write Card:the function is issuing the guest card;

Read Card:read the card information;

Group Card:This is for team check in.

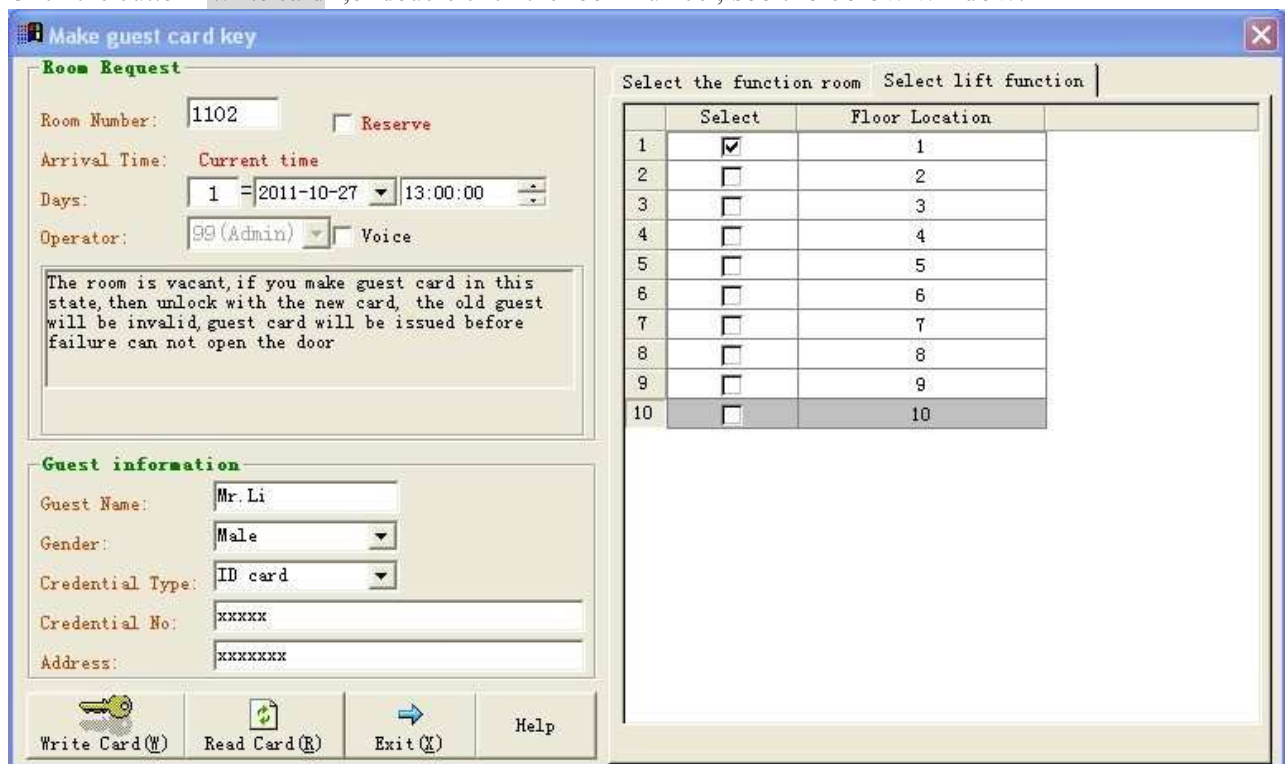
Check Out:check out without guest card, this function is mainly for guest card be lost;

Exit:close the interface;

Change Room State:there are six room states to be selected, this function is mainly for changing the room state after checking out;

Write Off:The card will become a blank card after Writed off;

Click the button "Write card" ,or double click the room number, see the below window:



Room Number: you can change the room number.

Reserve: Select the option, make Reservation card, you need to input the arrive time for reservation

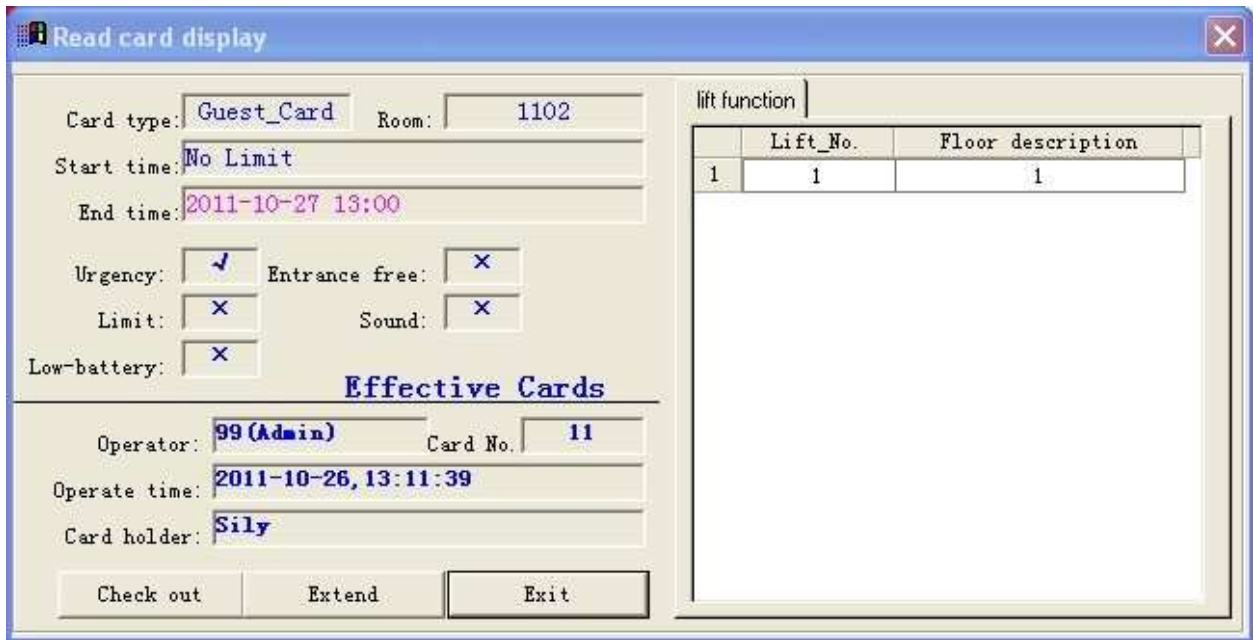
Arrival time:the default arrival time is the current system time

Days: Input days ,one day default

Voice: Select the option, open the door with this card ,the lock will give a sound notice..

Then input the guest information, you can select the function room and lift floor, finished, click "Write card" to make card for guest. The guest can use the card to unlock.

Click the button "Read card", read the guest card key, see the below window

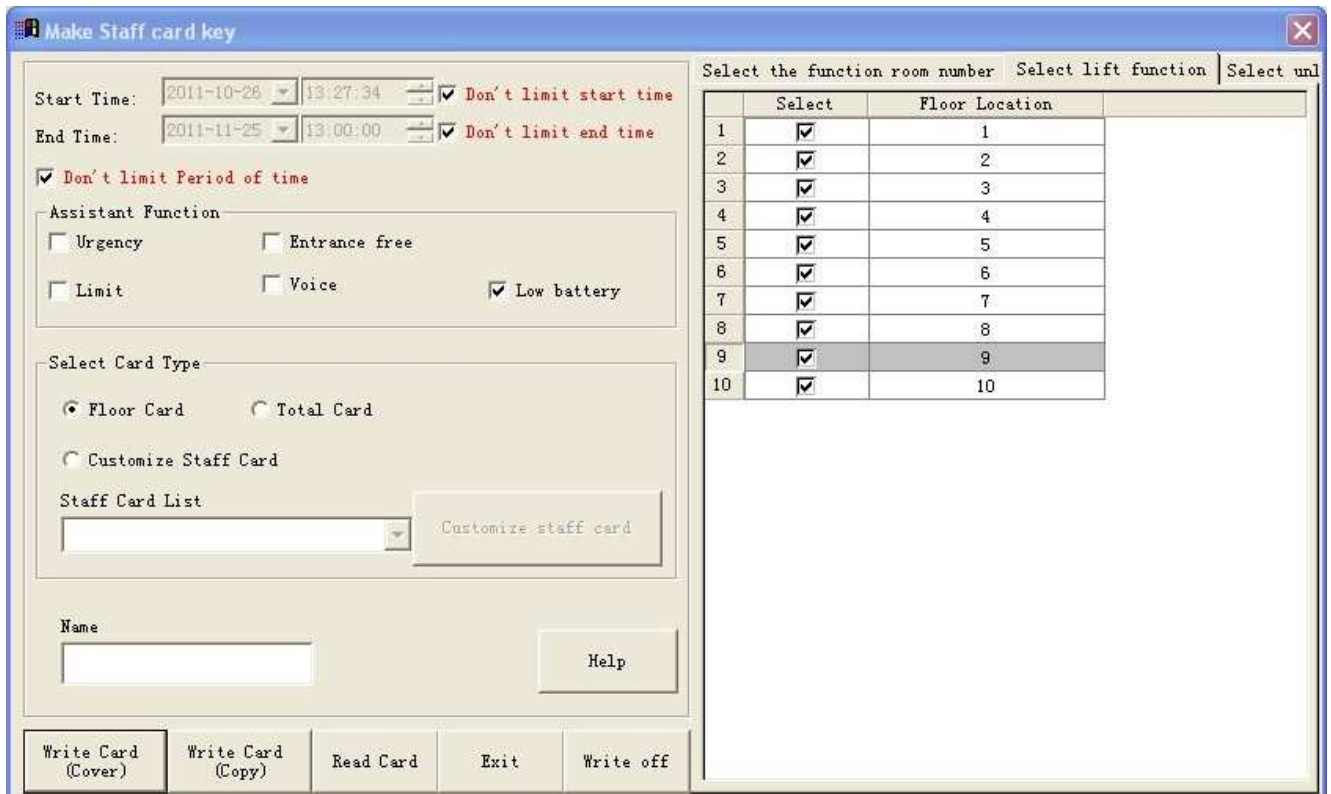


Check out: Check out with guest card, the card can't open the room.

Extend: This is for guest to continued to live

Staff Card

Click the button "Staff Card", see the below window:



Don't limited start time: If you choose this option ,the staff card start time no limited.if this option is not be chosen ,you can set the start time.

Don't limited end time: If you choose this option ,the staff card will be valid forever ,no time limited.if this option is not be chosen ,you can input the valid end time;

Don't limited period of time:if this option is not be chosen ,you can select the period time in the frame of select of period time;If you choose this option,the staff card will be valid for 24 hours a day;

The staff card with assistant function:

Urgency: The card with urgency function can open all the doors with any possible states.This function is mainly for the door was locked inside;

Entrance free: The door lock can be setted the entrance free mode using the card with entrace free function, door can be unlocked at any time without any card key,used in Meeting Room,Office ,and so on;

Limit: Use The card with limit function can limit the guest card key,the guest card key can't unlock the room.If you want to unlock the room with guest card key again,,you must have the room be check out and then issue a new guest card key;

Voice: If you choose this option,the staff open the door with this card,the lock will give a sound notice,otherwise sound notice will be not given;

Low battery: If you choose this option,when the staff open the door with this card,it will give alarm when the power of battery is insufficient,and still can open door approx.50 times,so this function is necessary for staff card;

Select card type: There is 3 types card, Floor Card, Total Card and Customize Staff Card

Write Card (Cover): When you issue a new staff card key,the old staff card key will be cancelled.so only the lastest one card key is valid,there is one card can open the door.

Write Card (Copy): When you issue a new staff card key,the earlier staff card key is still valid,when you need many same type staff card key,you need to click this button,all the card can open the door.

Notice: We suggest the hotel administrators to set staff card for each staff with Customize Staff Card function,even if your cardkey is lost, you can keep quiet, the lost keycard can be invalidated by simple card operations on the lock.,the other staff's card will be no effect.When you issue staff card,click "Write Card (Cover)"

Download Door Data

Click the button "Download Door Data", see the below window:



Connect the lock programmer,click "Download lock data",download the data from pc to lock programmer,finished downloading,confirm frame of "Download data success" was opened up, click "ok", you can use the lock programmer to download data to locks.

Read Door Records

Click the button "Read Door Records", see the below window



Connect the lock programmer,click "Read Record",upload the data from lock programmer to pc for view.

6.Operation Flow:

Step 1: Install Smart Lock management software, after finished, driver install window will be popup, click "INSTALL".

Step 2: Connect the Card Issue Machine(Encoder) to the PC with USB interface, system will install the device driver automatically. Install device driver exactly, the blue light of Card Issue Machine(Encoder) is always on. The USB interface cannot be changed, otherwise the device driver need to be install again.

Step 3: Run the software, the software will scan the Card Issue Machine every startup, if scanned the Card Issue Machine, you can use the software and Card Issue Machine normally. Set the lock data, detail see the Software User Manual .

Step 4: Software Registration, detail see the Software User Manual .

Step 5: Finished the lock date setup, connect the Lock Programmer to Card Issue Machine with the Special line. When the screen become black, click the Button “DOWNLOAD” to download the lock data to the Lock Programmer.

Step 6: Download the data to Lock, Download the room number information, then download time and date. Detail operation see the Lock Programmer Manual please.

Step 7: Use the software to issue card key to unlock.. See the door lock function.

DOUWIN hotel Locks function

1.Card Types

The card key of hotel lock has three types: Guest card key, Staff card key and Mechanical key.

Guest card key is for the guest, The lock is operated by handles from both the inside and the outside of the door. Outside handle is a free turning movement while in locking state; the handle can be turned only in unlocking state. The Inside handle can be turned always. When ingress, the guest slide the card key then the lock unlocked, turn the outside handle to open the door; when egress, the guest turn the inside handle directly to open the door.

The staff card key not only can unlock, but have some assistant function:

Urgency Function: The card with urgency function can open all the doors with any possible states, even the deadbolt locked. This function is mainly for the door was locked inside.

Entrance free Function: The door lock can be set the entrance free mode using the card with entrance free function, door can be unlock at any time without any card, used in Meeting Room, Office , ect.

Limit function: Use the card with limited function can limit the guest card key, the guest card key can't unlock the door. If you want to unlock the door with guest card key, you need to issue a new guest card key.

Mechanical key

External emergency jack design ensure the hotel safety: The separate emergency mechanical structure will allow the unlocking by the mechanical key in emergency, when the battery power is off, the card key can't be used to unlock, the mechanical key can unlock.

2. Function of door lock

Data check function: record inside lock of 512 latest unlock information for viewing any time, the door lock autosave the unlock record, the administrator can know all the unlock record, include who, when and where.

Intelligent alarm indication: If the door handle not be turned after using the card key to unlock, it will be in closed state automatically within 3 seconds. If the door not be fully closed after the door unlocked, the lock

will alarm to indicate guest or waiter to close the door well.

Number of card key: One lock can identify at most 1000 pieces card.

Emergency administrate card: When the software can't be used or the computer system crashed, you can use the emergency administrate card to make the guest card key, can ensure the hotel run normally even the PC can't be used. want to use this function, you need to make the emergency administrate card with software in advance.

Low battery alarm: It will give alarm when the power of battery is insufficient, and still can open door approx.50 times, you have enough time to change the battery.

No disturbing: When the door was locked from inside, a warning of no disturbing will be given if the door was attempted to unlock from the outside.

Lock clock: Keycards are limited by lock's clock, when the end of time of card key is out of the deadline, the keycard will be invalid, so the guest has to take the card to renew.

3. Smart lock management software Features

Software has a friendly interface, simple operation and alternative language of Chinese or English. The software has below function:

Public Gate: Suited for hotel's public facilities including Swimming pool, Underground Packing, etc.

Time Limited: The door can't be unlocked when the card time exceed the expired date.

Room Reservations: Setting the effectivity starting date of card in advance, which is convenient for group reservations.

Hour room: The guest can check in by hours.

Low battery alarm: If you choose the Low battery alarm option, the lock will give a sound notice when the battery power is insufficient, otherwise sound notice will be not given.

Unlock Sound notice: If you choose the sound notice option, the guest unlock the door with this card, the lock will give a sound notice, otherwise sound notice will be not given.

Function Room: The guest can use his card to open not only his room, but the function room selected, such as Health club and Entertainment center, ect.

Keycards levels: The software has flexible keycard levels, user can set the levels according the actual requirement.

Group issue: The software support group issue function, this function is used mainly for group reservations.

4. Lock Operator Flow

(Switch means switch lock inside)

1. Unlock with card key

Slide the card key close to the induction area → Blue led light is flashed and sound notice be given, in

unlock state → Turn the handle to open the door.

2. Function with limited

Slide the card with limited function → The red and blue led will be flashed by turns in the induction area → Change the switch state three times to confirm setting limited function, Warning tone be given when operate successfully → the old guest card can't open the lock, the new guest card made with new code can open the door again. If your guest depart without return back the card, you can use this function to cancel that card.

3. Function for entrance free

The door lock can be set the entrance free mode using the card with entrance free function, door can be unlock at any time without any card, used in Meeting Room, Office ,ect.

Slide the card with entrance free function → The red and blue led will be flashed by turns in the induction area → Change the switch state three times to confirm setting entrance free function, Warning tone be given when operate successfully.

If you want to cancel the entrance free function, you just need to change the switch state three times.

4. Emergency administrate card

When the software can't be used or the computer system crashed, you can use the emergency administrate card to make the unlock card, use this function you need to make the emergency administrate card in advance.

Slide emergency administrate card → Warning tone be given, the red and blue led will be flashed quickly by turns in the induction area → Change the switch state one time → put another card(it maybe a new card) to the induction area → Warning tone be given when operate successfully, you can use the card to unlock.

Lock Direction Representation

DouWin

Lock

DOUWIN Int'l Industry Limited

